

National Predictive Services Forecast

Southwest

Published: Jun 23, 2019 9:38:22 AM

| Predictive Service Area (PSA) | Sun | Mon | Tue | Wed | Thu | Fri | Sat |
|-----------------------------------|-----|-----|-----|-----|-----|-----|-----|
| | 23 | 24 | 25 | 26 | 27 | 28 | 29 |
| | Jun | Jun | Jun | Jun | Jun | Jun | Jun |
| SW01 - Northwest AZ | | | | | W | | |
| SW02 - West-Central AZ | | | | W | W | | |
| SW03 - Southwest AZ | | | | | | | |
| SW04 - Four Corners Area | | | | | W | W | |
| SW05 - Western Mogollon Rim | | | | | W | W | |
| SW06N - Central AZ/Phoenix Metro | | | | | | | |
| SW06S - Southeast AZ | | | | | | | |
| SW07 - Northwest NM Mtns. | | | | | | | |
| SW08 - White Mtns. & Gila Region | | | | | | | |
| SW09 - South/Central NM Lowlands | | | | | | | |
| SW10 - Sangre Ds Cristo Mountains | | | | | | | |
| SW11 - Central NM Mtns. & Plains | | | | | | | |
| SW12 - South-Central Nm Mtns. | | | | | | | |
| SW13 - Northwest NM/NW TX | | | | | | | |
| SW14N - Southeast NM/West TX | | | | | | | |
| SW14S - Southwest TX/Big Bend | | | | | | | |

Weather Discussion

Drying/warming trend intact with continued signs of moisture arrival focused east of the divide area from the south/southeast by TUE/WED with some breezy/windy conditions focused west of the divide region by later this week.

Strong ridging remains over the eastern Gulf of New Mexico this morning with a strong anomalous low driving eastward across the cntrl Rockies into the high plains. Mid-upper level flow has begun shifting to the west-northwest west of the divide region with areas east of the divide shifting later today as the system heads over SD/MO/IA by tmrrw mrng. Expect continued breezy conditions today focused along/east of the NM central mountains with decreasing winds elsewhere across the region. Some wind gusts as high as 35 mph are possible today with the winds turning west-northwesterly overall and with sharply cooler air east of the divide area...slight warming across AZ overall.

This week will see rebounding temperatures closer to normal with moisture return from the south/southeast by around midweek as the upper level high starts moving northward from old Mexico to over New Mexico by late week/next weekend. The persistence of the subtropical high to linger over areas east of the divide region is good news in that it will continue to gradually allow more moisture north-northeastward into the region to near/along the divide area by more than likely late this week/next weekend. Indications are that the summer monsoonal pattern will continue to attempt to get underway, but will likely be initially be focused along/east of the divide area into the first week of July.

Fuels/Fire Discussion

Drying/warming the first half or so of the week with increasing significant fire potential area-wide coincident with both increasing moisture along/east of divide region (lightning ignitions) and breezy/windy conditions focused north/west.

Resource Discussion

SW Daily Resource Summary (SWDRS)

(https://gacc.nifc.gov/swcc/predictive/intelligence/daily/UPLOAD_Files_toSWCC/D_03_40_Daily_Resource)

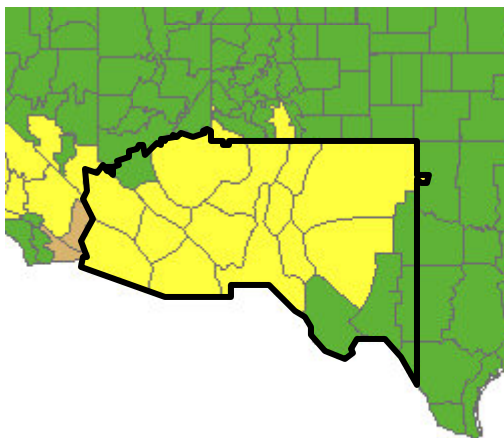
SW Anticipated Resource Demand (SWARD)

(https://gacc.nifc.gov/swcc/predictive/intelligence/daily/Daily_SWARD/Daily_SWARD.htm)

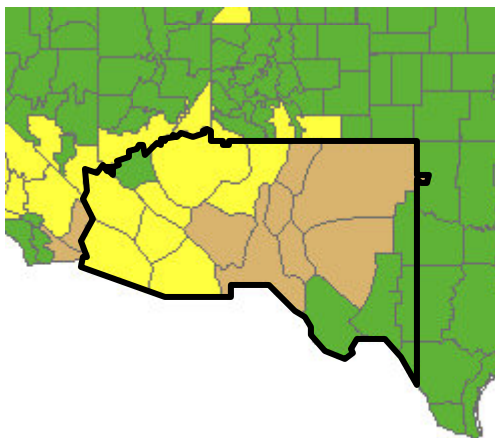
Printable Version (PDF) of SWA 7-Day Outlook

(https://gacc.nifc.gov/swcc/predictive/intelligence/daily/UPLOAD_Files_toSWCC/F_03_10_7-Day_Outlook.p)

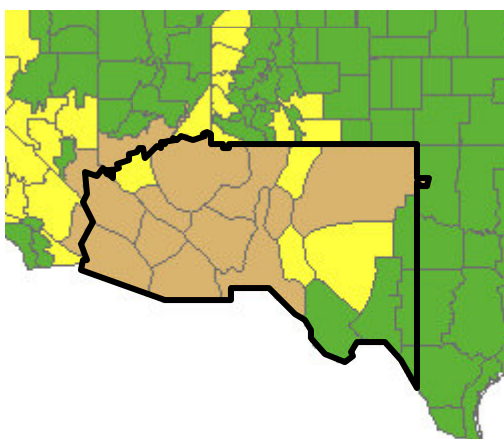
Jun 23, 2019



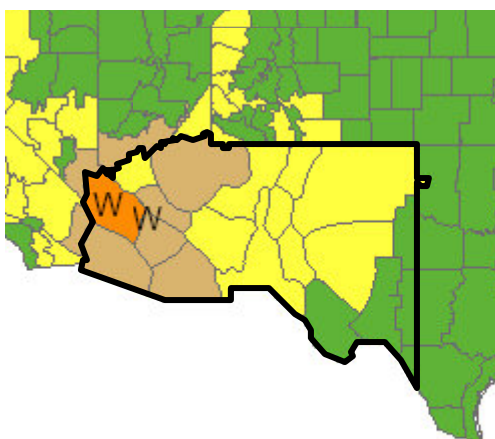
Jun 24, 2019



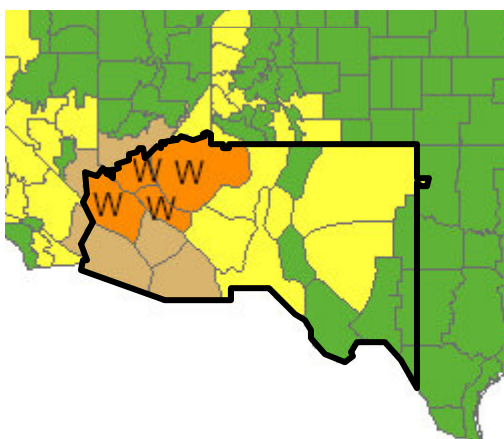
Jun 25, 2019



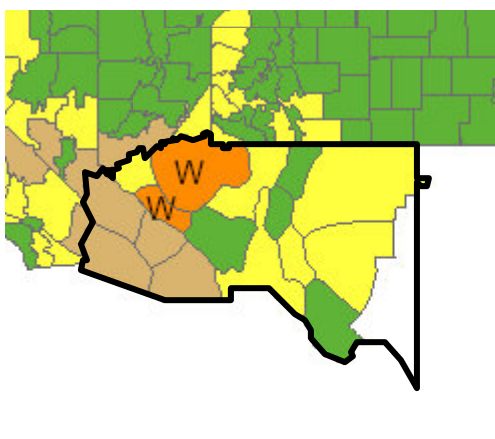
Jun 26, 2019



Jun 27, 2019



Jun 28, 2019



Jun 29, 2019

